

# 2011 Tour de Nez

Featuring the USHF Handcycle National Race Series

Presented by IGT

And the

USA Cycling National Race Calendar

Men's Pro and Women's Races



Tour de Nez  
World Headquarters  
333 Flint St.  
Reno, NV 89509

Tim Healion  
Race Director  
Tour de Nez Outreach

Sanctioned by USA Cycling  
Permit #  
2011-2484  
Supported by Truckee Bicycle Club

## Schedule of Events

### Pro. Cat 1/2 Race Calendar

Day	Date	Time	Race	Distance	Prize
Sun.	7/31	3:00-4:30 pm	Mighty Tour de Nez Criterium, Reno	1.5 hour	\$15,000 top 30

Jerseys; Red-overall, white-U23.

### Pro./Elite Women Cat 1,2,3 Race Calendar

Day	Date	Time	Race	Distance	Prize
Sun.	7/31	1:40-2:40 pm	Mighty Tour de Nez Criterium, Reno	1 hour	\$7,500 top 20

### Master's Race; 35+1,2,3

Day	Date	Time	Race	Distance	Prize
Sun.	7/31	11:30-12:30 pm	Mighty Tour de Nez Criterium, Reno	50 min.	\$5,000 top 20

### Hand-cycling Race Calendar

Day	Date	Time	Race	Distance	Prize
Sat.	7/30	10:00-11:30 am	Cold Springs Time Trial	7 miles for women and quads 14 miles for rest	
Sun.	7/31	10:00-10:35 am	Mighty Tour de Nez Criterium, Reno	35 min.	\$3,000 split

### Junior's Race Calendar

Day	Date	Time	Race	Distance	Prize
Sun.	7/31	10:45-11:20 am	Mighty Tour de Nez Criterium, Reno	35 min.	Merchandise/ prizes, and Jersey

### Recreational Rides

Day	Date	Time	Event	Distance	Start/ Location
Sun.	7/31	9:00-10:30 am	Ride with the Pros.	25 miles	Wingfield Park, Reno VIP Tent

### Community Races

Day	Date	Time	Race	Location
Sun.	7/31	12:30-1:40pm	Kids' Race	Wingfield Park, Reno
			Mighty Tour de Nez Annual Clunker Classic	Wingfield Park, Reno
			Messenger "N'Ally Cat" Race	Wingfield Park, Reno
			Pop ArtCycle Parade	Wingfield Park, Reno

## **Bicycle Festival**

Saturday, July 23

10:00 am: Pop ArtCycle Business Bike Tour

Friday, July 29

9:00 pm: Reno Film Festival bicycle film; "Breaking Away", at Wingfield Park Amphitheater

Saturday, July 30

10:00 am: Time Trial in Cold Springs Valley (Handcycle Only)

6:00 pm: Meet the athletes event

7:00 pm: Pop ArtCycle display art Wingfield Park

Sunday, July 31

9:00-10:30 am: "Ride with the Pros," group ride with athletes in the morning meet at the VIP tent in Wingfield Park for refreshments.

10 am-5:00 pm: Expo, music, demos, food, festival, and party, all day during the races at West Wingfield Park

## **Tour de Nez Outreach**

The mission of Tour de Nez Outreach is to promote cycling as the ultimate environmentally sound, healthy, family-oriented, fun-for-all-ages, accessible, community-minded activity.

Executive Director            Tim Healion

Board Members:

Rick Campbell	President
Tom Qualls	Vice-President
Ernie Barager	Secretary
Daniel Dugan Ph.D.	
Dave Corthell	
John Sagebiel Ph.D.	

## **Race Personnel**

Chief Referee:	Carla Geyer
Chief Judge:	
Assistant Judges:	
Motor Photo:	Chris Mahannah, Brett Asp
Assistant Referees:	
Timing:	One to Go Events Services
Technical Support:	SRAM Neutral Support
Announcers:	Tim Healion
Race Headquarters:	Tour de Nez Outreach 333 Flint, St. Reno, Nevada 89509

## **Tour de Nez Crew**

Event Director	Tim Healion
Event Operations	Jake Barrett
Race Director	Tim Healion
Public Relations Superstar	Abbi Jayne Holtom Whitaker
Volunteer Vixen	Katy Yetter
Expo Director	Jill Carpenter
Glorified Gopher (the Glue)	Lyndsey Langsdale
Chief Marshal Reno Criterium	Steve Blackhall
Chief Motorcycle Marshal	Chris Mahannah
Hand-cycling Liaison	April Wolfe
Housing Coordinator	Tracy Busch
Registration	Rose and Annie-Rose Healion
Kids Race Coordinators	Demeat and Jeff Healion
Stage/Podium	Ethel Murphy
Announcers	Tim Healion, Ethel Murphy, Laura Charameda, Ian Lawless, Gavin Chilcott, Greg Lemond
Merchandise	Emily Reid and Missy Allison
Pop ArtCycle	Dan Dugan
Attorney at Law	Demeat
Artist	Sheryl Chapman
Results Correspondent	John Gallager, One to Go Events Services, Abbi Jayne Holtom Whitaker
Photographer	Larry Rosa
VIP consierge	Dave Corthell
Television Executive Producer	Manuel Becerra
Moto Marshal/Photo	Chris Mahanna
Moto Marshal/Photo	Brett Asp
Moto Marshal	John Kennedy
Messenger Race	Bootleg Courier Boys, Chad Strand and Tim Condor
Gold Sprints	Bootleg Courier Boys;

## **Event Point Schedule (Handcycle Only)**

The 2011 Tour de Nez Handcycle Race is an Omnium.  
Points are awarded to the top thirty finishers in the individual stages,

Place	Cold Springs Time Trial	Reno Criterium
1 <sup>st</sup>	50	50
2 <sup>nd</sup>	45	45
3 <sup>rd</sup>	41	41
4 <sup>th</sup>	38	38
5 <sup>th</sup>	35	35
6 <sup>th</sup>	32	32
7 <sup>th</sup>	30	30
8 <sup>th</sup>	28	28
9 <sup>th</sup>	26	26
10 <sup>th</sup>	24	24
11 <sup>th</sup>	22	22
12 <sup>th</sup>	20	20
13 <sup>th</sup>	18	18
14 <sup>th</sup>	17	17
15 <sup>th</sup>	16	16
16 <sup>th</sup>	15	15
17 <sup>th</sup>	14	14
18 <sup>th</sup>	13	13
19 <sup>th</sup>	12	12
20 <sup>th</sup>	11	11
21 <sup>st</sup>	10	10
22 <sup>nd</sup>	9	9
23 <sup>rd</sup>	8	8
24 <sup>th</sup>	7	7
25 <sup>th</sup>	6	6
26 <sup>th</sup>	5	5
27 <sup>th</sup>	4	4
28 <sup>th</sup>	3	3
29 <sup>th</sup>	2	2
30 <sup>th</sup>	1	1

**Ties in final standing will be broken based on points scored in the final event.**

## **NRC Points Distribution (Men and Women)**

Place	Ranking (1.4)
1 <sup>st</sup>	60
2 <sup>nd</sup>	36
3 <sup>rd</sup>	30
4 <sup>th</sup>	27
5 <sup>th</sup>	24
6 <sup>th</sup>	21
7 <sup>th</sup>	18
8 <sup>th</sup>	15
9 <sup>th</sup>	12
10 <sup>th</sup>	11
11 <sup>th</sup>	10
12 <sup>th</sup>	9
13 <sup>th</sup>	8
14 <sup>th</sup>	7
15 <sup>th</sup>	6

### **Young Rider Competition**

Sponsored by City of Reno

There will be U 2 3 Champion jerseys awarded for both the Men pro/1 and Women's races.

## **Prize Money**

- Top three winners in each race will be awarded at the podium after each race. All other checks will be mailed to riders on or before August 15, 2011.
- All riders who earn \$600 or more during the event will be required to provide W-9 tax information prior to prize checks being sent. W-9's required from all payees.

### **Pro Cat 1 Men**

Place	Reno Criterium
1	3754.71
2	1877.35
3	1251.57
4	938.68
5	750.94
6	625.78
7	536.39
8	469.34
9	417.19
10	375.47
11	341.34
12	312.89
13	288.82
14	268.19
15	250.31
16	234.67
17	220.87
18	208.59
19	197.62
20	187.74
21	178.80
22	170.67
23	163.25
24	156.45
25	150.19
26	144.41
27	139.06
28	134.10
29	129.47
30	125.16
TOTAL	\$15,000.00

**Pro 1/2/3 Women**

Place	Reno Criterium
1	2084.64
2	1042.64
3	694.88
4	521.16
5	416.93
6	347.44
7	297.81
8	260.58
9	231.63
10	208.46
11	189.51
12	173.72
13	160.36
14	148.9
15	138.98
16	130.29
17	122.63
18	115.81
19	109.72
20	104.23
TOTAL	\$7,500.00

**Master's 1/2/3 (35+) Men**

Place	Reno Criterium
1	1389.76
2	694.88
3	463.25
4	347.44
5	277.95
6	231.63
7	198.54
8	173.72
9	154.42
10	138.98
11	126.34
12	115.81
13	106.9
14	99.27
15	92.65
16	86.86
17	81.75
18	77.2
19	73.15
20	69.49
TOTAL	\$5,000.00

## **Handcycling**

Place	Women	H-1	H-2	H-3 and H-4
1	400.00	400.0	400.0	400.0
2	250.00	250.0	250.00	250.0
3	100.00	100.0	100.00	100.0
<b>TOTAL</b>	<b>\$750</b>	<b>\$750</b>	<b>\$750</b>	<b>\$750</b>

## **TECHNICAL REGULATIONS**

### **THE Tour de Nez IS GOVERNED BY THE 2011 USAC REGULATIONS.**

The 2011 USAC Regulations governing races are in effect unless specific exceptions are noted in this Race Bible.

## **HELMETS**

### **RIDERS ON BICYCLES MUST WEAR HELMETS AT ALL TIMES**

Note: Riders, staff and support personnel are bound at all times by the laws of the states of Nevada. Criterium courses are to be closed one-half hour before race start times. Any infraction of state laws may result in penalties and fines, at the discretion of the Chief Referee, in addition to local law enforcement actions. Helmets are required before, during and after events by all those on bikes, including racers, staff and support personnel.

## **Leader's Jerseys**

Leader's Jersey must be worn during the subsequent Stages (Handcycles). Penalties for failure to wear leader's jerseys will be assessed as provided under USAC rules.

In the case that the same rider has earned more than one jersey, they will be awarded both. An additional jersey of lower priority will be given to the rider currently in second place in the category to represent the jersey. At the final awards ceremony, multiple jerseys may be awarded to a single rider.

### Order of priority.

1. Leader Jersey
2. Young Rider
3. Points Jersey
4. World Champion
5. National Champion
6. Continental Champion
7. National team

## Numbers

All provided numbers must be worn as is, without alteration or folding, **Two numbers placed each on one side of the back.**



Riders May be fined for improperly placed numbers. Riders who retire from the race are required to return number to officials.

## SUPPORT

Neutral Support will be provided by SRAM for all Stages.

## PROTESTS

Any protest must be submitted in writing, accompanied by a deposit as specified in the Schedule of Fees, and be filed with the race commission within the following deadlines: **(a)** Concerning placings: no later than the close of sign-in for the next stage; **(b)** Concerning an incident during the race: no later than one hour after the finish; **(c)** Concerning the final general placings: up to 15 minutes after the official announcement

**Special Penalties:** The top 3 finishers of each race are required to attend award ceremonies. Failure to appear at an award ceremony may result in forfeiture of one half of the prize money for the individual race. Got approved to keep it all but giving you guys a break, remember, it's a show/performance, perform!

## SIGN-IN

Only one day this year so no sign in.

## **Pre-Registered Check-in all venues**

You must check-in no less than 30 minutes prior to your event to get your number and sign in. Reno check-in will be in the registration tent located in West Wingfield Park on the west side of Arlington near the Start/Finish

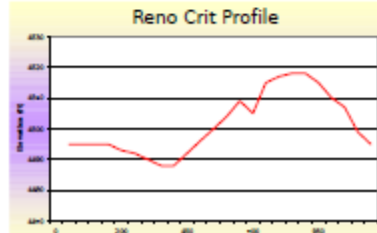
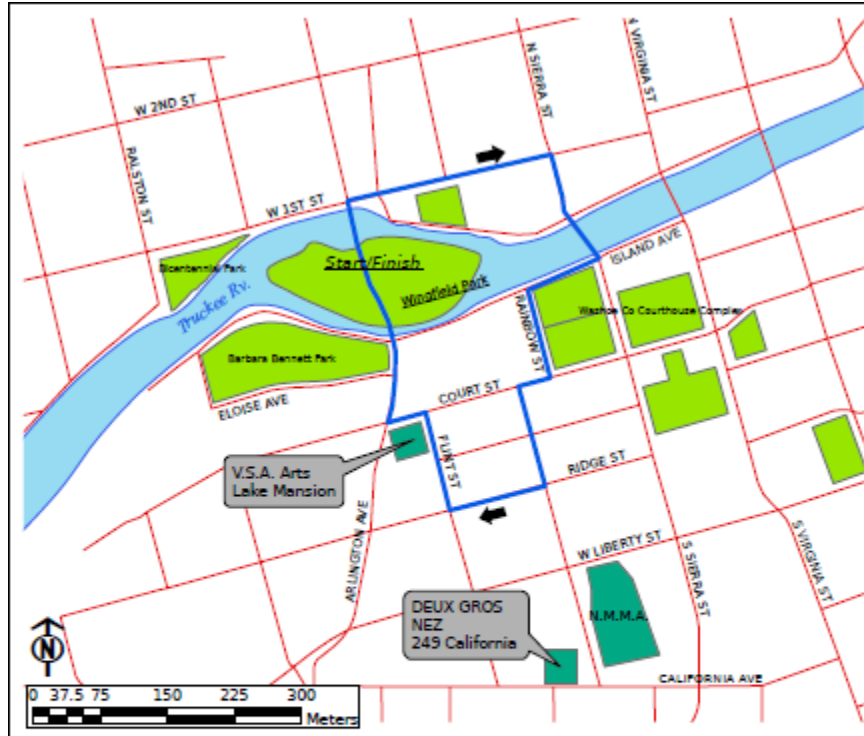
'Day of' registration closes 60 minutes before the event!

## **Mighty Tour de Nez Criterium in Reno**

- What:** 60 minute timed Criterium (Master's)  
60 minute timed Criterium (Women's)  
35 minute timed Criterium (Hand-cyclist's and Juniors)  
1.5 hour timed Criterium (Pro Cat 1/2)
- Where:** Downtown Reno, Nevada
- When:** Sunday, July 31
- Directions:** From I-80 in Reno, take the Keystone Avenue exit. At the stoplight, turn south onto Keystone Avenue. Stay in the left lane on the bridge over the Truckee River and turn left at the stoplight onto California Avenue. Continue on California Avenue approximately ¼ mile to the next light, Arlington Avenue, and turn left. Wingfield Park is straight ahead.
- From US 395 in Reno, take the Plumb Lane exit. Go west on Plumb Lane to Virginia Street and turn right. Go about a mile down Virginia Street to California Avenue and turn left, continue west on California Avenue to Arlington Avenue and turn right. Wingfield Park is straight ahead. Parking is available at the corner of Virginia st. and Court st. (SE corner lot) Handcycle parking is available through; April Wolfe; wolfea@reno.gov
- Start/Finish Line:** On Arlington Avenue at Wingfield Park.
- Race Course:** The criterium course is a technical and challenging loop through downtown Reno near Wingfield Park on the Truckee River. Average lap speed will be computed for specific races and riders will be shown laps remaining starting with 5 laps to go.
- Free Lap Rule:** In effect until 5 laps to go.
- Registration:** At the Registration Tent near the Start/Finish line on Arlington Avenue.  
On-site registration for hand-cyclists will end at 9:00 am.  
On-site registration for Juniors will end at; 9:45 am.  
On-site registration for Masters will end at 10:30 am.  
On-site registration for Women will end at 12:40 pm.  
On-site registration for Pro Cat 1 will end at 2:00 pm.
- Check-in:** At the Registration Tent near the Start/Finish line on Arlington Avenue.  
Up to 30 minutes prior to event for pre-registered racers
- Sign-in:** No Sign in this year; one event except handcycles and we're watching you guys.

- Awards: At the Start/Finish line near the announcer's stage on Arlington Avenue.
- Hand-cyclist's: 10:40 am  
Juniors: 11:25 am  
Master's: 12:35 pm  
Women's: 2:45 pm  
Pro Cat: 4:35 pm
- Parking: There is no designated parking for Racers, Teams or Staff, although there are many public parking areas in downtown Reno. **Exception; Handcycles and you've all been messaged about parking.**
- Warm-Up: Suggested warm up areas are to the west on 1st street and riverside drive, or to the south on Arlington Avenue. **Riders warming up must wear helmets.**
- Feed Zone: There is no feed zone for the Criterium. There will be a spray zone due to the heat to be announced.
- Technical Support: SRAM Neutral Support will be at the race start/finish.
- Medical Support: Medical Support will be at the race start/finish.

# Reno Course Map

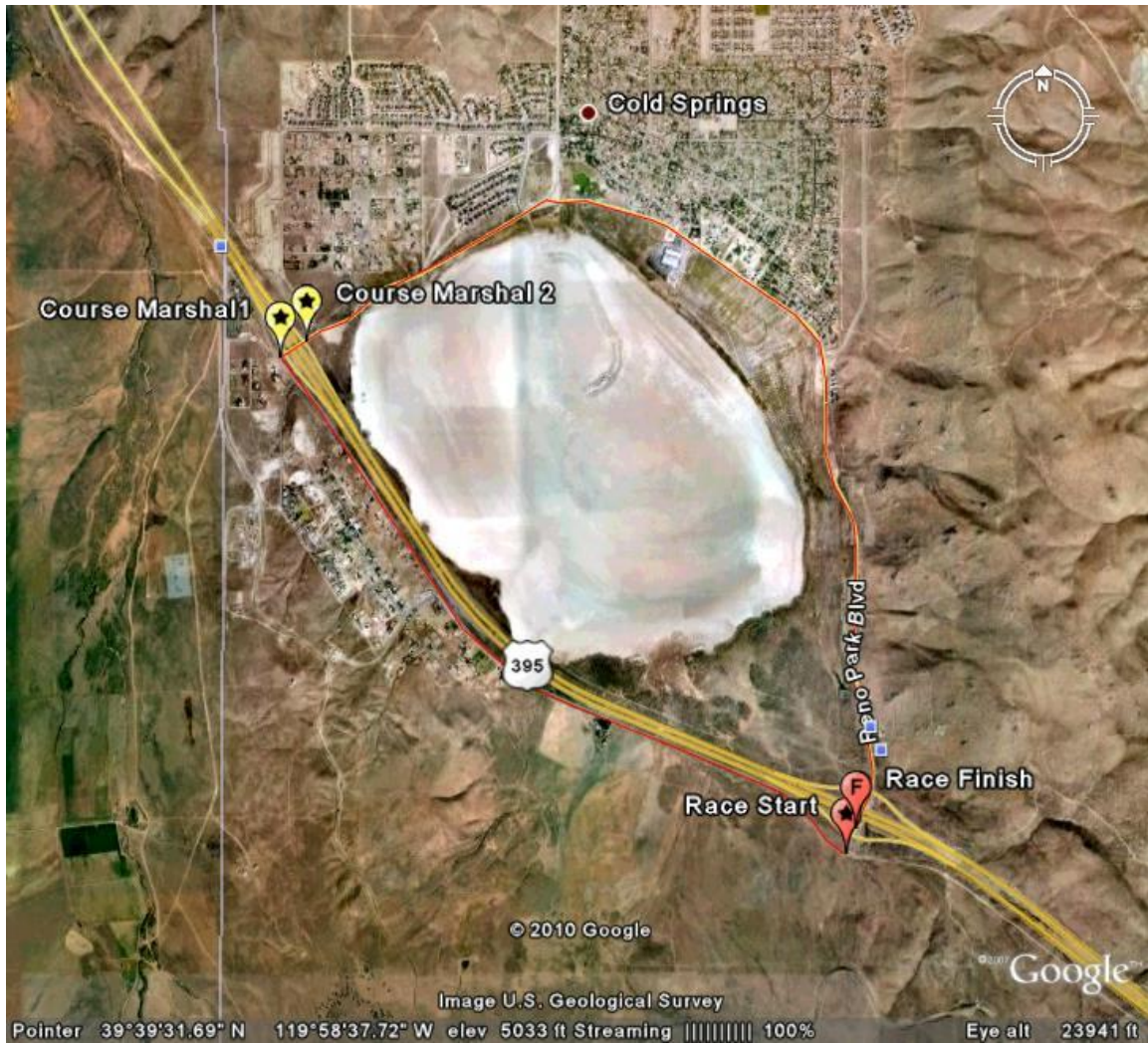


Don't forget your kids!



Map Produced by Rob Bender

# Cold Springs Valley Time Trial Course Map



## **Additional Information**

### **Pre-Registered Check-in**

You must check-in 30 minutes prior to your event to get your number and sign in.  
Reno check-in will be in West Wingfield park near the start/finish.

### **Hotels**

**Circus Circus**  
500 N. Sierra St.  
Reno, NV 89501  
(800) 648-5010

**Silver Legacy**  
407 North Virginia St.  
Reno, NV 89501  
(800) 687-8733

**Super 8 at Meadow Wood Courtyard**  
5851 S. Virginia St.  
Reno, NV 89502  
(775) 825-2940

**Club Cal Neva**  
38 East 2<sup>nd</sup> St.  
Reno, NV 89501  
(775) 323-1046

### **Sponsors**

IGT      Artown      Buckbean      CalNeva      CommRow      Silver Legacy  
City of Reno      Craft Beer and Wine      The Hub      Demetras and O'Neil  
Abbi PR      RTC      USA Cycling      Barrick Mines      Circus Circus  
Trial Science      Armstrong-Teasdale      Champion System      Reno Tahoe USA  
US Handcycling Federation      Granite Construction      E.L. Cord Foundation, John Shaw Field  
Foundation,